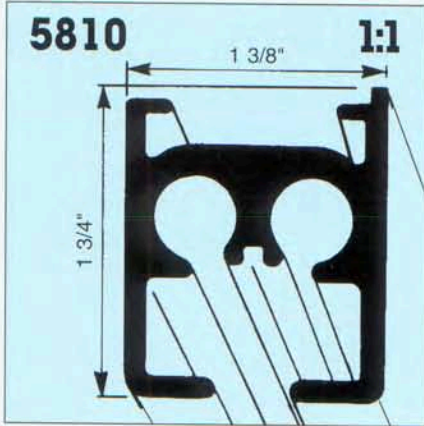
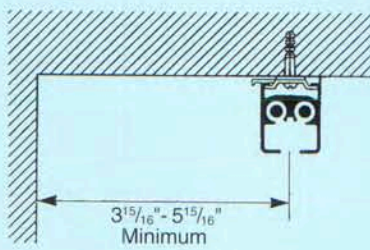


Heavy Duty/Stage Cord Drawn Curtain Track System Silent Gliss® 5850



Installation

Ceiling mount with bracket #3603

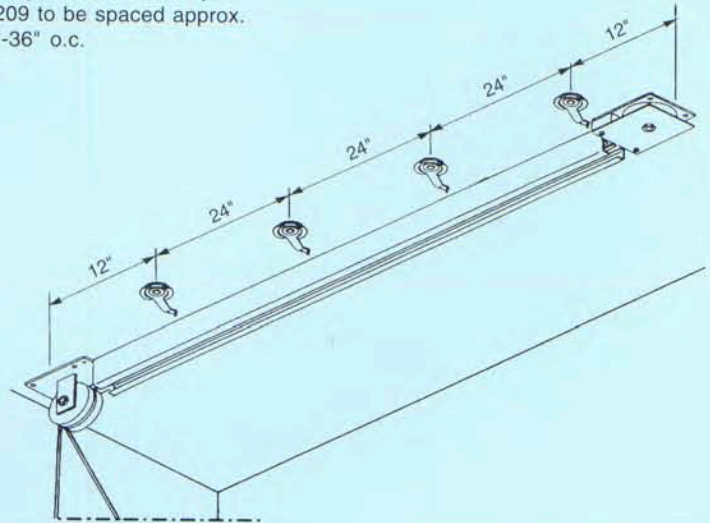


Suspended Mount



Suspended by chain or cable to eyelet bolt #5824, spaced approx. 36"-46" o.c.

Ceiling mount with clamp #6209 to be spaced approx. 24"-36" o.c.



Product Information

- #5850 is a heavy duty and stage cord drawn drapery track system
- Suitable for high or especially heavy draperies
- Small inconspicuous profile with internal cord channels
- Lengths up to 100'
- Maximum drapery weight 300 lbs.
- Pinch pleat or box pleat draperies
- Ceiling mount or suspended
- Curvable on both inside and outside radii, minimum radius 20"
- Ideal for theaters, auditoriums, television studios, stages, schools, ballrooms, churches
- 5 year warranty

Bending & Stacking Possibilities



Min. radius R
5810 = 20"

Standard Components



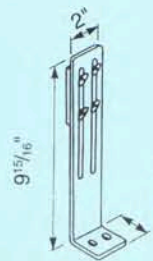
5816
Cord
Guide



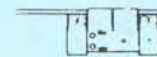
5815
Cord Guide
Return



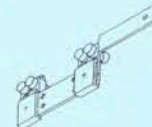
6070
Cord



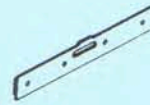
6578
Floor
Plate



5806
Pilot



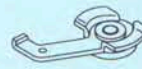
5811
Overlap
Arm



6203
Connecting
Bridge



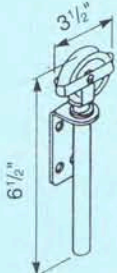
5824
Eyelet
Bolt



6209
Clamp



5809
Roller



6575
Cord
Tensioner



5850